

MONUMENT TOOLS

STIKFAST STICKY WASHERS

A plumber's third hand.

Centralising, anti-swivel, acrylic washers.

Double sided adhesive washer sticks the tap or fittings in place leaving both hands free for threading and tightening backnuts.

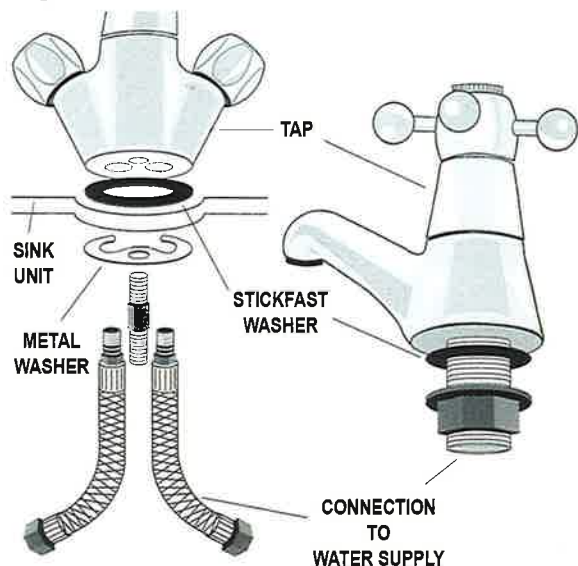
Universal size for 1/2" and 3/4" taps, monoblocs, tank connectors, ball valves and toilet seat fixings.

Time saving when installing new taps.

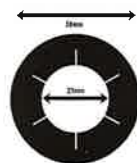
Essential when replacing old taps and fittings in-situ.

Double up for undulating china surfaces.

External diameter 50mm, Internal hole size 21mm. Cut incisions for larger hole diameters.



External Diameter 50mm
Internal Hole Size 21mm
Trim to size using scissors.
Cut incisions for larger hole diameters.



Tip : Trim to size when cold

www.monument-tools.com/stickfast.htm

www.monument-tools.com

MONUMENT TOOLS

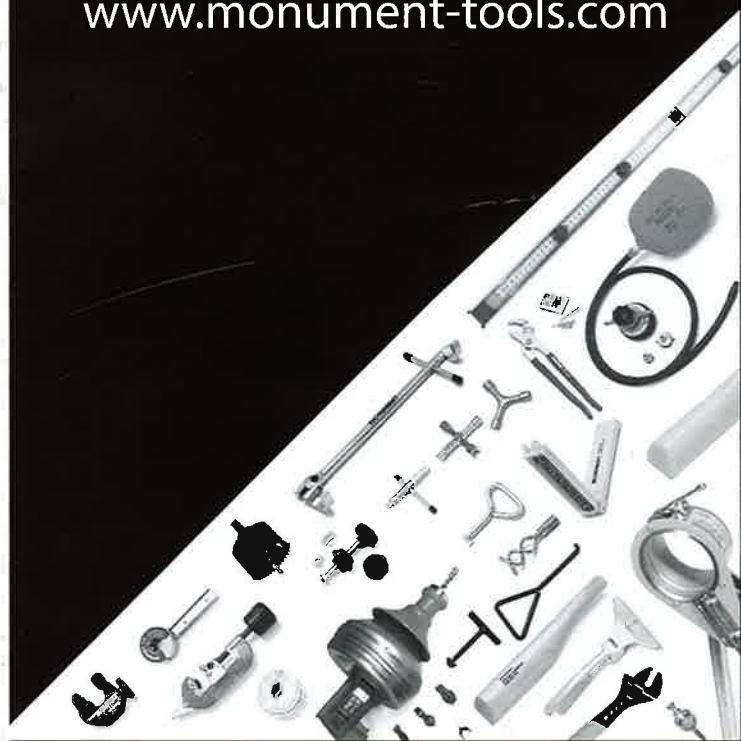
Monument Tools Ltd.
Restmor Way
Hackbridge
Surrey
SM6 7AH

t +44 (0)20 8288 1100

f +44(0)20 8288 1108

info@monument-tools.com

www.monument-tools.com



MONUMENT TOOLS

MONUMENT STIFFNUTS[®]™

www.monument-tools.com/stiffnuts.htm

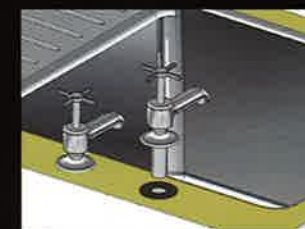


REMOVES
STIFF
TAP BACK NUTS



RAPID
TAP INSTALLATION
TOOL

See how it works at:
monument-tools.com/stiffnuts.htm



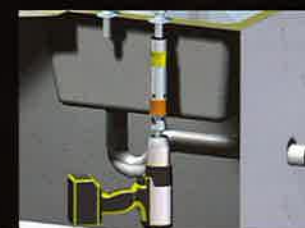
Patent Applied for.
Registered Design Applied for.

TOOL STAYS
ON TAP TAIL
WHEN IN USE



USE WITH
STIKFAST STICKY
WASHERS

AVAILABLE for
24 25 26 27 29
& 32mm NUTS



USE CORDLESS
DRILL ADAPTOR or
RATCHET



Refer to the product outer label for contents. Not all Monument Stiffnuts kits contain all of the parts shown in these instructions.

REMOVING STIFF NUTS

Depending on the tool purchased, the alignment and assembly of the tools is shown. Ensure the tube with the orange gripper is upwards.



The end of the tube with the orange gripper turns only the threaded sleeve. This end has shallow castellations.

Once the tool is assembled, start to drive the tool onto the tail of the tap by turning the tool clockwise.



Rotate up to the nut. DO NOT engage fully onto the nut.

Engage, by hand, the socket onto the nut by moving the socket up onto the nut. Then, hand tighten the tube onto the nut.



Remove the tube and rotate and refit, so the yellow gripper is now attached. The threaded sleeve and socket remain in place.

The end of the tube with the yellow gripper turns the threaded sleeve and the socket. This end has deep castellations.



Rotate the tool anticlockwise and the nut, socket and threaded sleeve are removed.

Use either a suitable tommy bar (not supplied) or a cordless drill with a Monument Stiffnuts driver to make the job easier and quicker.



Ensure the cordless drill is on the lowest torque setting.

RAPID TAP INSTALLATION

Use a Monument Stikfast Washer to locate the tap in position.



The end of the tube with the yellow gripper turns the threaded sleeve and the socket. This end has deep castellations.

Depending on the tool purchased, the alignment and assembly of the tools is shown. Ensure the tube with the yellow gripper is upwards.



Rotate until the nut is in position. DO NOT overtighten as damage may be caused to the sink.



The end of the tube with the orange gripper turns only the threaded sleeve. This end has shallow castellations.



Rotate the tool anticlockwise.

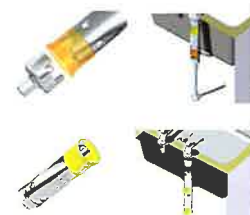
Continue rotating anticlockwise until the threaded sleeve and the socket are removed.



Use either a suitable tommy bar (not supplied) or a cordless drill with a Monument Stiffnuts driver to make the job easier and quicker. Ensure the cordless drill is on the lowest torque setting.

Use the 1/2in. Hex driver in conjunction with a ratchet. The ratchet and socket driver give additional power and reach.

Use the extension tube to give extra reach. The extension tube gives an overall length of over 300mm



STANDARD KITS

170N 1/2in.BSP 27mm & 3/4in.BSP 32mm 6 piece kit. Includes castellated tube, 3/8in. cordless driver and full instructions. Boxed.



173W 1/2in.BSP 25mm 27mm & 3/4in.BSP 29mm 32mm 10 piece kit. Includes castellated tube, extension tube, 3/8" cordless driver, 1/2in. ratchet driver and full instructions. Boxed.

PARTS

151G Tube



160H Extension Tube.



156V 1/2in. BSP Threaded Sleeve.



158B 25mm A/F Socket For use with 1/2in. BSP Threaded Sleeve.



157Y 27mm A/F Socket For use with 1/2in. BSP Threaded Sleeve.



161K 24mm A/F Slotted Socket**. For use with 1/2in. BSP Threaded Sleeve.



162N 26mm A/F Slotted Socket**. For use with 1/2in. BSP Threaded Sleeve.



163R 3/4in. BSP Threaded Sleeve.



164U 32mm A/F Socket, For use with 3/4in. BSP Threaded Sleeve.



159E 29mm A/F Slotted Socket**. For use with 3/4in. BSP Threaded Sleeve.



154P 3/8in. Round Drive. For use with Cordless drill.



155S 1/2in. Hex Drive. For use with 1/2in. Ratchet.



** Slotted Sockets allow for slight variations in nut sizes.